

Closure of previously stalled, stage III pressure ulcer in elderly patient with dementia

Self-Adaptive Advanced Wound Dressing Clinical Results

Patient:

An 88-year old female with advanced Alzheimer's disease presented to the clinic with a stage III pressure ulcer that had been present for 2 months on the left buttock.

Wound Description:

At admission to the clinic, the stage III ulcer measured 1.0 x 1.5 x 0.1 cm with 20% slough (Fig. A). The wound had been treated with gauze and over-the-counter antibiotics during the prior two months. The wound was off-loaded and vitamin and protein supplementation were initiated. Enzymatic debridement ointment and moist dressings were applied to the ulcer for 20 days. At 20 days, wound healing appeared stalled, despite wound being free of slough and signs of infection. The wound measured 0.9 x 1.0 x 0.1 cm and a decision was made to apply Self-Adaptive Advanced Wound Dressings.

Application of Self-Adaptive Advanced Wound Dressings:

Following sharp debridement, the Self-Adaptive Wound Dressing was placed over the ulcer, overlapping 2 to 3 cm onto intact skin. The dressing was secured with an adhesive, and dressings were changed once per week.

Wound Progression with Self-Adaptive Wound Dressing:

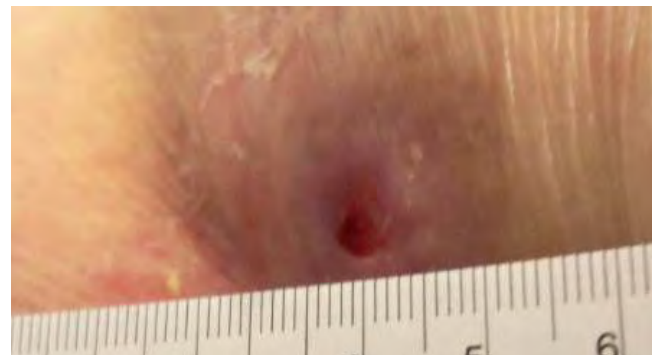
During the first week of Self-Adaptive Wound Dressings, wound dimensions were reduced by 60% (Fig. B). After two weeks (two dressing changes), the wound was fully re-epithelialized with excellent cosmetic result (Fig. C) and the dressings were discontinued. Fig. D shows the healed ulcer at the one month follow-up.

User Experience:

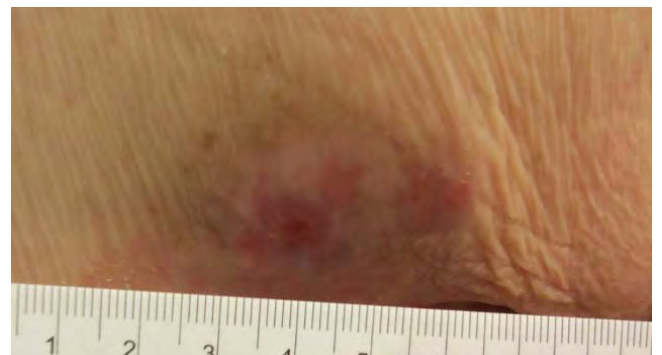
The caregiver reported high satisfaction with the Self-Adaptive Dressings, primarily due to the accelerated healing time, compared to prior dressings.



A. **At presentation.** Stage III pressure ulcer measured 1.0 x 1.5 x 0.1 cm with 20% slough at presentation. An enzymatic ointment and moist dressing were applied to the ulcer for 20 days with little to no improvement. The first Self-Adaptive Wound dressing is placed.



B. **Day 7.** After the first Self-Adaptive Wound Dressing, wound measured 0.5 x 0.7 x 0.1 cm (60% reduction) with healthy edges rapidly epithelializing toward the center.



C. **Day 14.** After the second Self-Adaptive Wound Dressings, the wound was 100% epithelialized with excellent aesthetic result.

Clinical Outcomes/Conclusion:

Self-Adaptive Advanced Wound Dressings were effective in managing and healing this previously stalled pressure ulcer in an elderly patient. Only two dressings were required during the healing time of 14 days. Wound edges were healthy and not macerated throughout treatment with the dressing. At each dressing change, dressing remained securely in place with no leakage. We observed considerably faster decreases in wound size and healing with self-adaptive dressings, compared to prior moist treatment modalities.



Reference:

Juan Bravo, MD CWS UHM
Broward Health Coral Springs Medical Center
Coral Springs, FL
joscarbravo@gmail.com

D. **One-month follow-up.** Ulcer remains healed at one month following treatment.

